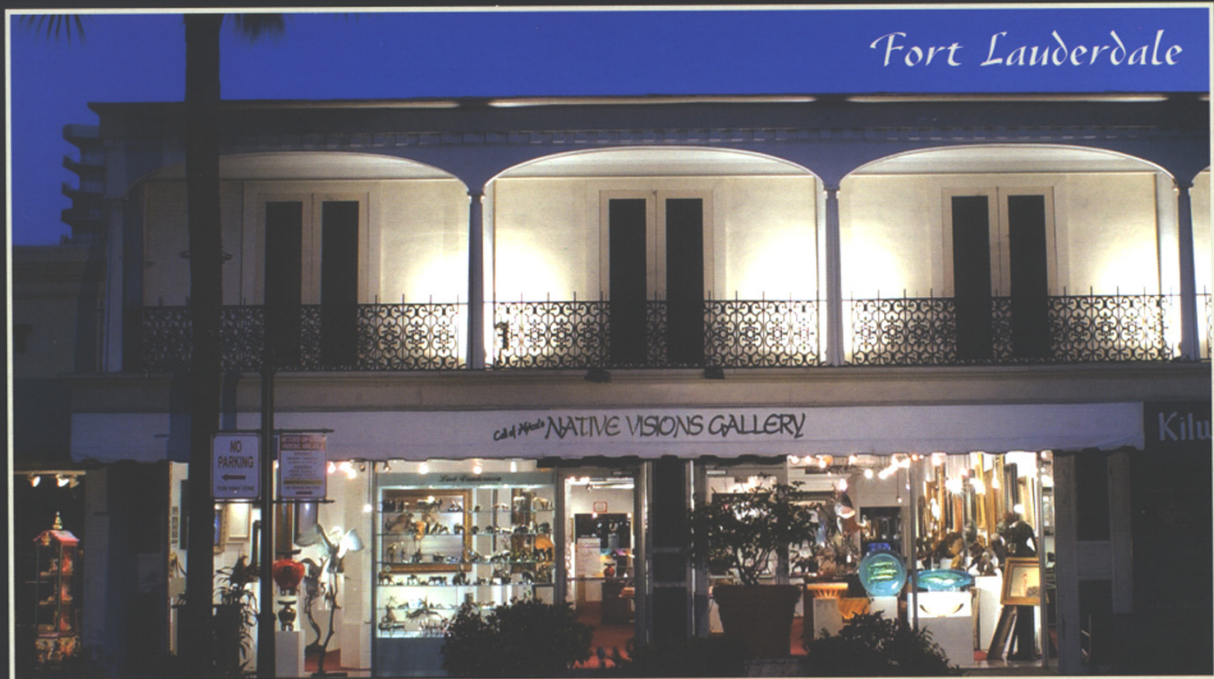


Native Visions Galleries

20th Anniversary Celebration

1987 - 2007



Featuring the
Finest Nature
Artists of
the World



Since 1987

Wildlife & Bird Life
Landscapes & Florals
Seascapes & Marine-Life
Glass Art & Sculpture

807 East Las Olas Blvd.
Fort Lauderdale, FL 33301
(954) 767-9714

GALLERY LOCATIONS

www.callofafrica.com

737 5th Avenue South
Naples, FL 34102
(239) 643-3785

Celebrating Our 20th Year in the Art Business

As we celebrate our 20th anniversary year as one of the most respected, premier wildlife and nature art galleries in the world, I would like to take this opportunity to thank the great team of people who have contributed to our success, including our artists, the marketing, administrative, framing design, warehouse and sales teams we employ, many of whom have been with us for more than a decade! Just as importantly, and with a special note of thanks, I would like to thank clients like you who have helped get us here with your loyalty and support.

It is an honor to serve you and I trust that our team of experts has helped you discover the joys of collecting the timeless works our geniuses have created. We will continue our passion to celebrate wildlife and its habitats and to help support them through conservation and education. And as always, we will continue our endeavor to provide you with the most prestigious environmental artwork in America today.

~Ross Parker, President~

Extraordinary Carvings in Leadwood by Mopho Gonde



Mopho Gonde is considered the finest wood sculptor in Africa. Born in 1968 in Zimbabwe, Africa Mopho began sculpting in stone at an early age under the tutelage of Sam Jongo. At the age of 19 he began sculpting in Ironwood and was hooked. The great thing about Ironwood is that hardwood trees need not be destroyed. This medium comes from dead trees which have laid in the African sun and rain for years and have become almost petrified.

Mopho's animal sculptures are painstakingly created by hand and capture the very essence of each animal in exacting detail. Because of the degree of workmanship that goes into creating each piece, he is only able to create between 17 to 20 pieces a year. This puts Mopho's work in great demand as serious wildlife art collectors have begun to acknowledge his great talent.

David Langmead

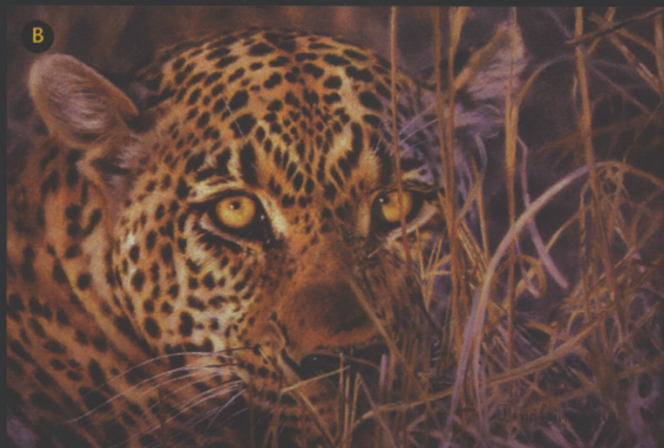
New Limited Edition Giclée "Zebra Ripples"

Contact your Fine Art Consultant
for pre-publication information



David Langmead continues to awe us with his incredible talent. His painting "Spoonbill Impression" was recently chosen by the prestigious Leigh Yawkey Woodson Art Museum's 'Birds in Art' juried show. In 2006, "Morning Medley" was selected for the museum tour including exhibits at the Arnot Art Museum, NY; Putnam Museum, IA; The Wildlife Experience, CO; Lindey Wildlife Museum, CA and R.W. Norton Gallery, LA.

Check our website, www.callofafrica.com for David's limited edition print releases coming out soon, or call your favorite fine art consultant.



- | | |
|-------------------------|------------|
| A. Spoonbill Impression | 17" x 24" |
| B. Eye Contact | 7½" x 10½" |
| C. Kariba Bull | 47" x 30" |

James Stroud



Breaking away from “mainstream” wildlife art, James Stroud’s originality is second to none. Creating thick texture with the use of a palette knife, his work has a wonderful contemporary feel, yet also frames beautifully in traditional molding. He is perhaps this genre’s most impressive emerging genius.

A. Afternoon Blush
48" x 30"

C. Soul Mates
48" x 30"

B. Gannet in Flight
24" x 48"

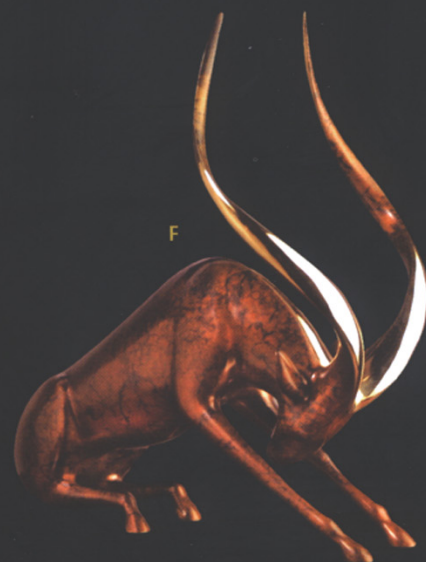
D. In Search of Water
30" x 48"

Loet Vanderveen

Loet captures the innate elegance of animals frozen in a powerful or tender moment.

E. Orangutan Baby
9" x 3½" x 6"

F. Stretching Gazelle
15" x 8" x 14½"



Peter Gray



In 1973 Peter moved to the United Kingdom from Africa seeking a career painting portraits and taking on commissions. He participated in numerous group exhibitions in and around London. Reviews in *The Times*, *Tader* and various foreign magazines gave him good publicity and occasional notoriety to his work. As the years passed, Peter yearned for Africa and he finally made a decision to relocate to Zimbabwe where he opened a foundry producing bronze and silver sculpture. With sculpting and painting, Peter has established himself as an artist to be reckoned with.

He has participated in many exhibitions and his art has toured in some of the most prestigious fine art galleries and museums. Peter is a member of the Society of Animal Artists, a highly prestigious and recognized organization that chooses select artists as its member through a panel of jurors. World renowned artists such as Simon Combs, David Shepherd, and Ray Harris Ching are members of the Society. Additionally, Peter's bird paintings have been selected by the Leigh Yawkey Woodson "Birds in Art" juried show as one of the very few to be chosen for their annual traveling museum tour.



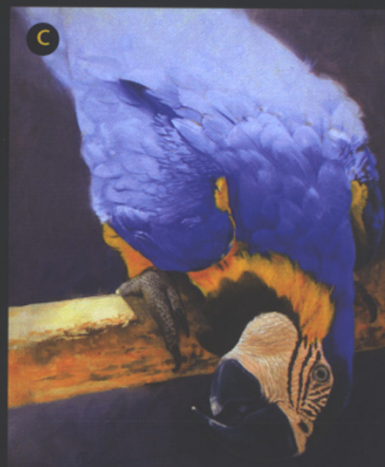
A. Zebras at Hwange
36" x 56"

B. Birds Of A Feather
26" x 35"

C. Talking to Me?
12" x 10"

D. Black Faced Impala
12" x 18"

E. Waterhole Buddies
28" x 53"



Introducing Paul Apps

Born in 1958 in Kent, England, Paul developed an early love of nature and wildlife from exploring the Romney Marshes where he was raised. Drawing and painting the wildlife he observed started as a hobby, but due to early

success and increasing demand for his work, Paul decided to turn professional in 1987.

Since then his reputation as a wildlife, equestrian and portrait painter has increased dramatically. Exhibitions of his work have been held in the U.K., Africa, Singapore, Europe and the USA where his first one man show sold out on the opening night. For many years Paul taught art techniques and wildlife art painting and he has demonstrated many art products for various major materials manufacturers. He has also contributed to many art tuition magazines and a book.





Tony Forrest

This up-and-coming British painter uses thick brushwork to create visually dramatic experiences on canvas.

- | | |
|--|--|
| A. Dual Force
Oil on canvas
25" x 40" | D. Night Heron
26" x 10" |
| B. Cattle Egret
Oil on canvas
10" x 10" | E. Striking Distance
35" x 15" |
| C. The Inquisitor
Oil on canvas
16" x 32" | F. Oval Salmon Bowl
5" x 22" |
| | G. Joffrey
Bronze
18" x 12" |

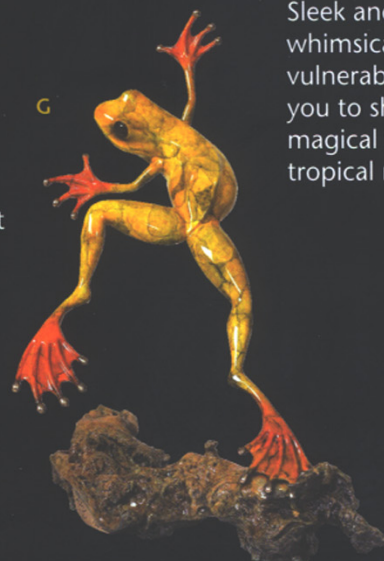


Geoffrey Smith

Geoffrey Smith creates his bronzes in a loose impressionist style, often leaving traces of his finger tips suggesting feathers and fur on the subjects. These bronze wall hangings are great for those areas difficult to find something for.

Joseph Quillan

Sleek and sensitive, whimsical and vulnerable. We invite you to share the magical world of Joe's tropical rainforest.



George Bucquet

The heirloom quality of museum artist Bucquet's solidly rich creations is highlighted through hand applied copper, silver and gold leaf.



Shirley Greene



Shirley Greene continues to amaze us with her wonderfully soft, impressionistic style using light and color to perfectly highlight her subjects' nuances and attributes.



Claire Naylor

Claire Naylor's "Seven Flamingos" was chosen for the prestigious Leigh Yawkey Woodson Art Museum's 2007/8 juried art show.



James Tandi



- | | |
|--|---|
| A. Private World
Acrylic
10 1/4" x 13 1/4" | F. Loreto's First Date
Verdite
15" x 6" x 10" |
| B. Ballerina's
Acrylic
25" x 33" | G. Chief Balla Mona
Verdite
23" x 6" x 12" |
| C. Baby Steps
Acrylic
7" x 21" | H. Rhapsody Girl
Verdite
19" x 6" x 12" |
| D. The Advance
Oil
17 1/4" x 17 1/4" | |
| E. Seven Flamingos
Oil
23 1/2" x 41 1/4" | |

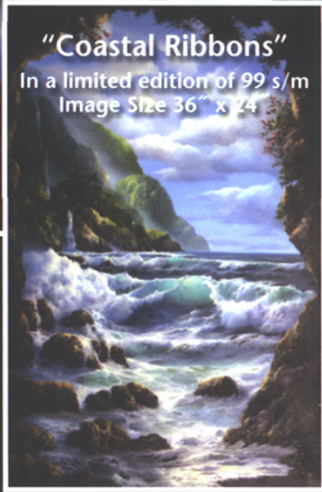
"Water to Music"

In a limited edition of 45 s/m
Image Size 36" x 60"



"Coastal Ribbons"

In a limited edition of 99 s/m
Image Size 36" x 24"



Newly released limited edition prints on canvas by
internationally acclaimed seascape painter, **Dy'Ans.**

Call for special pre-publication pricing.



RETURN SERVICE REQUESTED

920 NE 13th Street
Fort Lauderdale FL 33304