

Native Visions Galleries

Seasonal Update Summer 2008

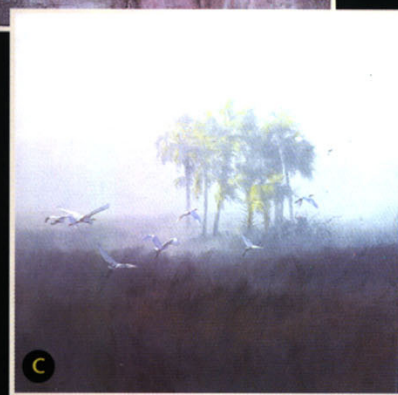
Kim Donaldson

"The Artist's Artist"

Kim Donaldson is truly an artist's artist. A master in every medium, he has painted all of Africa's great wildlife. His ability to paint in several styles including realism and impressionism to his latest contemporary works exemplifies his creative genius. Kim continually pushes the boundaries of artistic freedom and design to explore that which make an artist great.



- A. Southern Paradise
30" x 72"
- B. Alligator Alley
36" x 54"
- C. Morning Mist
40" x 40"



Featuring the
Finest Nature
Artists of
the World



Since 1987

Wildlife & Bird Life
Landscapes & Florals
Seascapes & Marine-Life
Glass Art & Sculpture

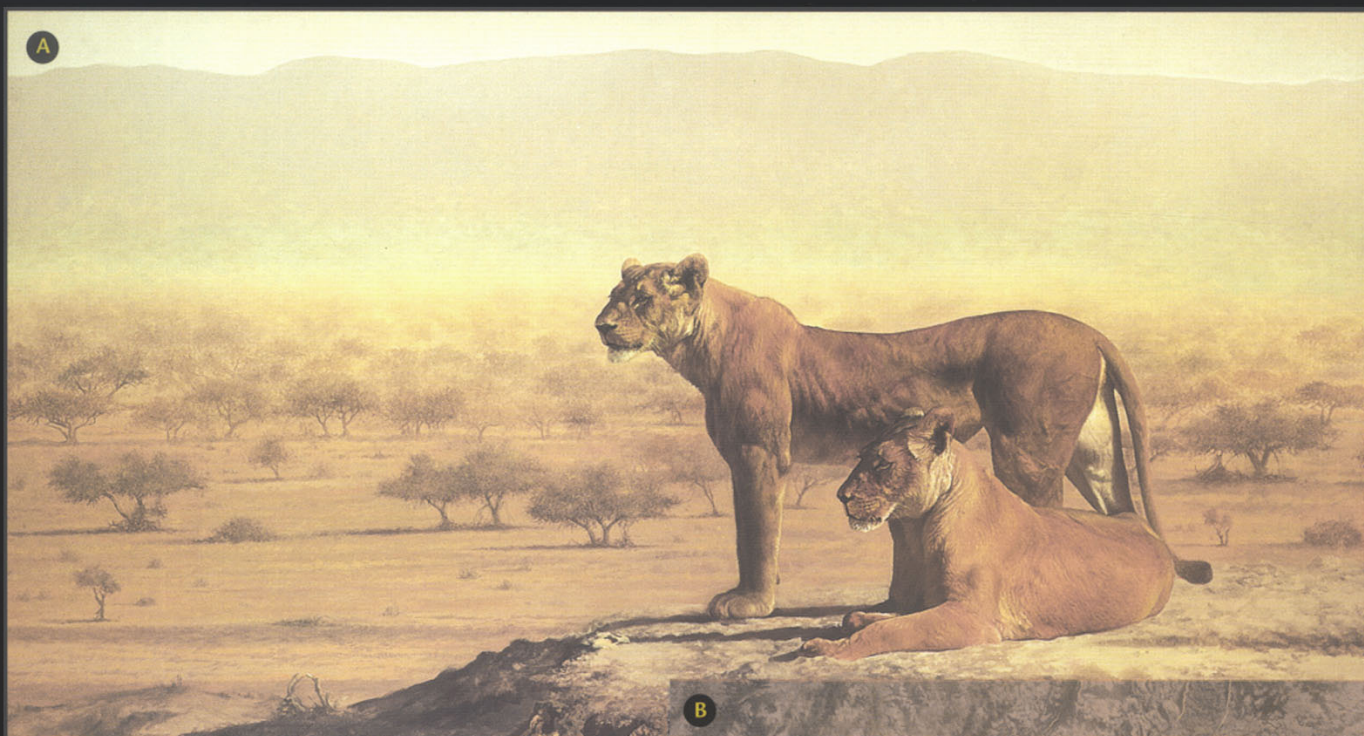
807 East Las Olas Blvd.
Fort Lauderdale, FL 33301
(954) 767-9714
gallery@callofafrica.com

GALLERY LOCATIONS

www.callofafrica.com

737 5th Avenue South
Naples, FL 34102
(239) 643-3785
nativevisionsgallery@earthlink.net

Peter Gray



Peter's home at Lake Michelle in Noordhoek, South Africa, has an environment that provides an ideal opportunity for him to study waterfowl and other bird-life in the area. Wild geese have even made his front lawn their home. Peter's painting "Eye Contact" was the first of his bird paintings to be accepted by the prestigious Leigh Yawkey Woodson's "Birds In Art" juried show in 2005. Since then Peter has beaten the odds and made it through the tough jury process each year.



Loet Vanderveen

Newly released limited edition bronzes by internationally acclaimed sculptor Loet Vanderveen.



- | | |
|-------------------------------------|---------------------------------------|
| A. Ladies of the Plain
46" x 75" | C. Toro Bull II
14.5" x 18" x 4.5" |
| B. Lioness and Goose
36" x 56.5" | D. St. Ives Bay
8" x 12" |

Tony Forrest

Directors' Choice Award



Stefanie Powers to Attend 23 Degrees' Reception and Fundraiser



Meet Artists Mopho Gonde, David Langmead and Stefanie Powers

February 12, 2009

807 East Las Olas Blvd.
Fort Lauderdale, FL 33301

February 12, 2009

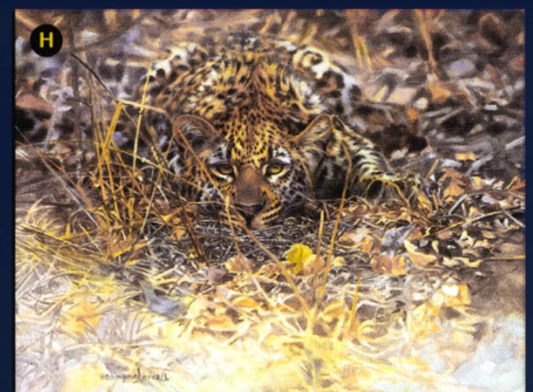
737 Fifth Avenue South
Naples, FL 34102

23 Degrees South Art of the Safari

The Tropic of Capricorn located 23½ degrees south of the equator, crosses through the countries of Madagascar, Mozambique, Botswana, South Africa and Namibia, home to some of the finest nature preserves in the world. David and Mopho are working on their finest collections depicting wildlife from these game parks which will be unveiled at this prestigious event.

It is safe to say that Stefanie Powers leads a double life, one in front of the camera or on a stage and one in absolute dedication to the preservation of animals and the natural world. Through Stefanie's relationship with William Holden, whose many years in Kenya had caused him to pursue conservation activities - long before the notion of wildlife endangerment had reached the popular culture - that her interest grew.

David Langmead's New Summer Collection



E. Vortex
16" x 19.5"

F. Ambush
10" x 18"

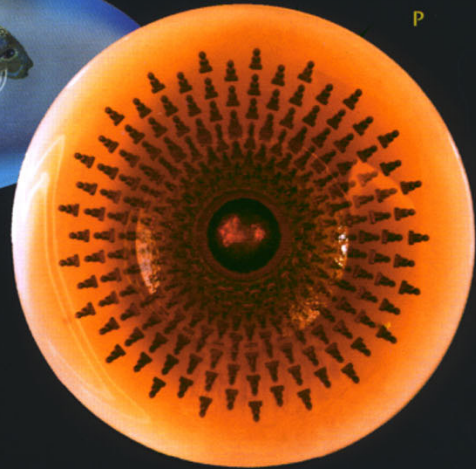
G. Resting Place
13" x 16"

H. Camo Cub II
12.5" x 13.5"

New Works By Cast Glass Artist, George Bucquet



O. Fish Bowl
30" x 9" x 3.5"



P. Buddha Bowl
24" x 3"

Just In! New Works by James Stroud "The LeRoy Nieman of Wildlife Art"

South African born painter, James Stroud, has become one of the most sought after wildlife painters of his generation and his work is often pre-sold from photographs before they can even reach the gallery walls.

Breaking away from "mainstream" wildlife art, James' originality is what sets him apart from other wildlife artists. Creating thick texture with the use of a palette knife, his work has a wonderful contemporary feel, yet also frames beautifully in traditional molding. He is perhaps this genre's most impressive emerging artist.

Using the latest in technology, we have re-created James' palette knife technique on canvas in the newest limited edition prints. The resemblance to his original textured oils is remarkable.

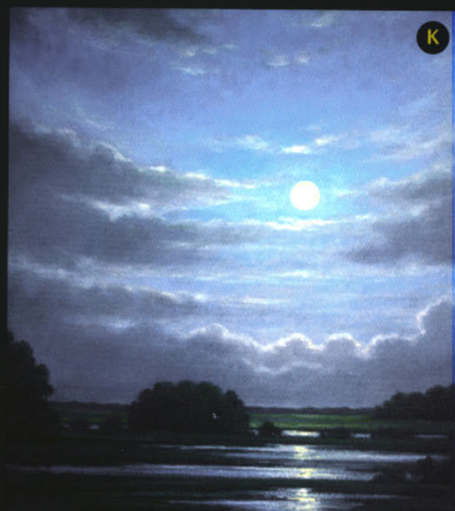


"Lioness and Cubs"

Limited Edition of 99 Signed and Numbered
Texturized Print on Canvas

Peter Pettegrew - Heart of a Landscape Painter

Peter Pettegrew has devoted his life to capturing the timeless beauty of panoramic landscapes and seascapes on canvas. His captivating impressionistic style using delicate tones, subtle luminous lighting, and savory blends of color, has resulted in distinctive paintings, many of which were executed en plein air (French expression meaning "in the open air"). A naturalist and outdoorsman, he camps, hikes and explores to find his timeless compositions.



James Tandí

With the ever increasing depletion of Zimbabwe's verdite mines, demand for works by master sculptor James Tandí are at an all time high.



- I. Low Country Colors
Oil on Canvas
11" x 14"
- J. Gulfcoast Marina
Oil on Canvas
18" x 24"
- K. Midnight Blue
Oil on Canvas
20" x 16"
- L. As the Light Shines
Oil on Canvas
14" x 18"
- M. Shona Princess
Verdite
21" x 13" x 10"
- N. My Uncle
Verdite
34" x 16" x 13"

John Seerey-Lester

"Godfather of Wildlife Art"



A

A. Stand Steady
24" x 48"



B

B. The Arrival
18" x 24"

John Seerey-Lester is taking a temporary step back in time to capture the golden era of the historic safari on canvas. English born, Seerey-Lester moved to America 25 years ago and has been painting the wildlife of the world ever since. But his reputation in England grew out of painting nostalgic scenes of the late 1800's and early 1900's. Now he is combining this interest for history with his passion for nature art.

His new series will not only include paintings chronicling the safaris of the early 1900's in Africa and India, but also be taking a nostalgic look back at North America's hunting heritage. Each painting depicts an actual event in hunting history and is accompanied by the story behind the piece.

In 2010 John will release his 6th book titled "Historic Safaris". We will be hosting a major exhibition and book launching at both our Fort Lauderdale and Naples galleries.



RETURN SERVICE REQUESTED

920 NE 13th Street
Fort Lauderdale FL 33304